



# ADVANCE LINE

CABLE MANAGEMENT SYSTEM L.L.C

“Reliable. Scalable.  
Engineered for Performance.”

## COMPANY PROFILE



[www.al-qatar.com](http://www.al-qatar.com)



NFPA 130-2007

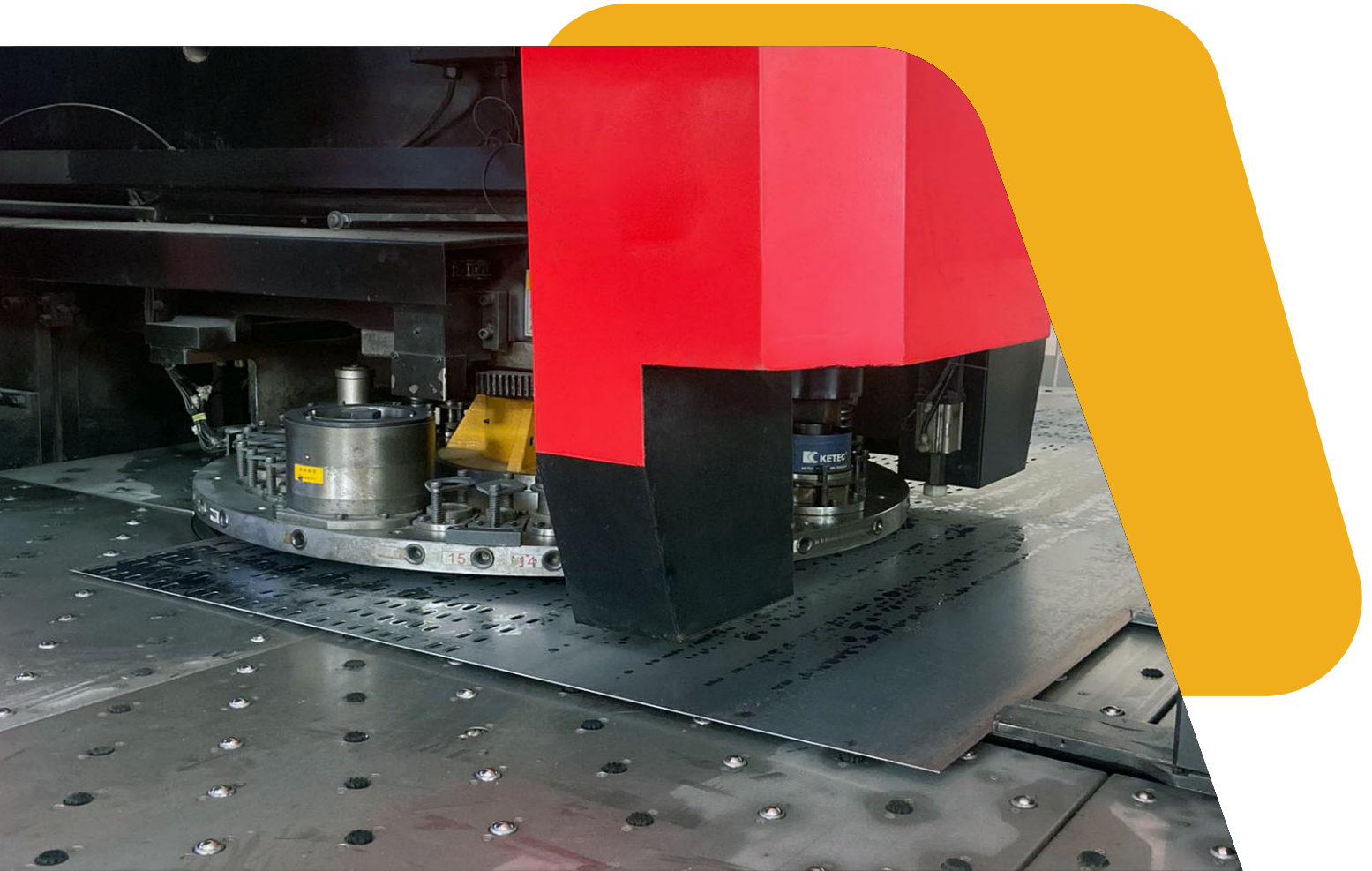


# Company Overview

**Advance Line Cable Management System L.L.C** is an established manufacturer Of Cable Trays, Cable Trunkings, Cable Ladders, Basket trays, Strut Channels & GI Switch Boxes. Our factory is located at Birkat Al-Awamer, Doha-Qata and is well equipped to carry out large Scale production for all Cable Support Systems. Our machine line consists of Automated Roll Forming Machines for Trays & Trunkings, Plasma Cutting Machine for Fittings & Accessories. Our GI Box Punch-in Press is capable of producing 50 boxes/minute.

Advance Line LLC is an ISO certified company vide ISO 9001:2015 (QMS), BS OHSAS 18001:2007, and ISO 14001:2015 (EMS). To ensure total customer satisfaction, Advance line LLC conducted product tests To verify compliance to standards and was awarded the following Certificates of Compliance:

- UL Certification NFPA 130-2007
- QIL Certification BS Cable Tray Load & Zinc coating mass BS EN 61537:2007 & BS EN ISO 1461
- QIL Certification BS Cable Trunking Load & Zinc coating mass BS EN 50085-2-1:2006 & BS EN ISO 1461
- ACES Certification Heat test Cable Tray, Trunking & Channel Assembly
- ACES Certification Load test NEMA VE-1
- EXOVA Certification ASTM A90/90M: 2013



## Table of Contents:

Company Overview	01
Table of Contents	02
Company Strategy	03
Scope of Work	04
Our Certificates	05
Our Certificates Continuation	06
Company Products	07
Materials and Finishing Standards	08
Production Equipment and Sample Boards	09
Our Project	10
Low-Voltage Switchgear & Control Panels	11
About Low-Voltage Switchgear	12
Vision & Mission	13
Offer	14

# Company Strategy

**Mission:**

Our mission is to supply our customers the best cable trays, trunkings, ladders, basket trays and GI switch boxes with high level of quality and best service standards and to be a leader in manufacturing cable-tray products by providing Enhanced products and services.

**Vision:**

To provide quality products that exceeds the expectations of Our esteemed customers and build a good reputation in the field of cable Management systems.

**Mission Statement:**

To build long term relationships with our customers And clients and provide exceptional customer services by pursuing business Through innovation and advanced technology.

**Core values:**

We believe in treating our customers with respect and faith

We grow through creativity, invention and innovation.

We integrate honesty, integrity and business ethics into all aspects of our Business functioning.



# Scope of Work

"Manufacturer and Supply of Cable Support Material, Cable Tray, Ladders, Trunking, Basket Tray and boxes Products"

## Financial Considerations:

The company expects to reach the desired profits in the first year and does not anticipate serious cash flow problems. We believe that the average profitability per month for the first 3 years will be sufficient. However, most of the company's liabilities come from management investment.

## Industry Information:

The following document provides information related to the industry for cable management system. (Product catalogue).

## Key Processes:

Latest technology and manufacturing equipment has improved the quality of reconstituted steel products.

Manufacturing of cable trays starts with the selection of raw materials, and we select the most quality of steel from India & Turkey.

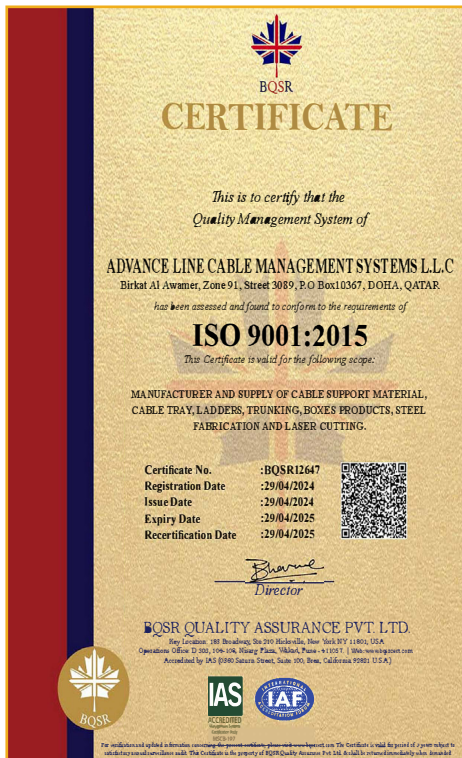
With our modern technology, equipment's and experienced staff we are ready to maintain leadership in this field.



**Advance Line LLC** is an approved manufacturer and Cable Tray Supplier for among other high profile clients:



# Our Certificates



**مختبرات قطر الصناعية ذ.م.ق**  
**QATAR INDUSTRIAL LABORATORIES W.L.L.**

GTx-637/1  
18<sup>th</sup> March 2019  
Page 1

TEST REPORT ON SWL FOR  
SINGLE SPAN CABLE TRAY

Project Client: ASHGHAL

QIL Client: ADVANCE LINE CABLE MANAGEMENT SYSTEMS

**1. Introduction**

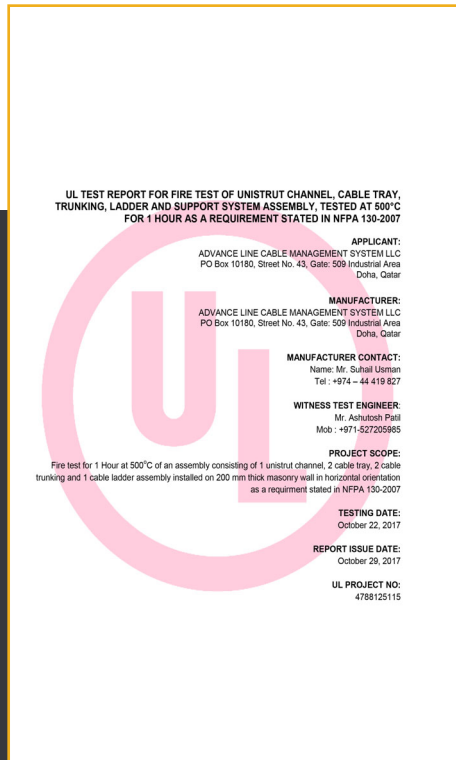
On the instructions of Advance Line Cable Management Systems, Qatar Industrial Laboratories (QIL) carried out the sampling and testing of Cable tray for Safe working load (SWL) as per BS EN 61537:2007 at QIL Main Lab, Industrial Area. The Cable trays were supplied by Advance Line Cable Management Systems.

Test was conducted on 18<sup>th</sup> March 2019.

**2. Equipment details**

Equipment	Reference No.	Calibration due date
Digital Dial gauge	Q/DG/036	2020-February-16
Vernier caliper	Q/V/C/ASPH/026	2019-August-01
Stop watch	Q/STP/11	2019-December-04
Balance	Q/BL/047	2020-March-02

• QIL is ISO/IEC 17025:2005 Accredited Laboratory. QIL Management System is ISO 9001:2008 Certified from ABS Quality Evaluations.  
• This certificate should not be reproduced other than in full, without the written approval of Qatar Industrial Laboratories W.L.L.  
• The above test results are only applicable to the sample(s) mentioned in this report.  
Laboratories of Ind. Area: P.O. Box 10415, Doha-Qatar, Tel.: 44601580 / 44601484 Fax: 44601739 Email: qil@qilqatar.com QR No. 17063  
Doha Office: 330, Al Muntash 5, Bld No. 148, New Al Salda, Tel.: 40291832 / 40293127 Fax: 40290544 Web: www.qilqatar.com



**مختبرات قطر الصناعية ذ.م.ق**  
**QATAR INDUSTRIAL LABORATORIES W.L.L.**

TEST REPORT  
CABLE TRUNK

PROJECT CLIENT: ASHGHAL

CONTRACTOR: ADVANCE LINE CABLE MANAGEMENT SYSTEM

PROJECT: GENERAL

Sample Description:	CABLE TRUNKING 100 x 100 x 2.44 mtr	Date Reported:	30.03.2019
Sample Source: <td>ADVANCE LINE CABLE MANAGEMENT SYSTEM</td> <td>QIL Lab # /</td> <td>GTx-636-1-2</td>	ADVANCE LINE CABLE MANAGEMENT SYSTEM	QIL Lab # /	GTx-636-1-2
Sample Location: <td>ADVANCE LINE CABLE MANAGEMENT SYSTEM PLANT</td> <td>Sample ID: <td></td> </td>	ADVANCE LINE CABLE MANAGEMENT SYSTEM PLANT	Sample ID: <td></td>	
Sampled By: <td>QIL</td> <td>Date Sampled: <td>17.03.2019</td> </td>	QIL	Date Sampled: <td>17.03.2019</td>	17.03.2019
Sample Delivered By: <td>QIL</td> <td>Date Received: <td>17.03.2019</td> </td>	QIL	Date Received: <td>17.03.2019</td>	17.03.2019
Sample Condition Upon Receiving: <td>SATISFACTORY</td> <td>Date Tested: <td>19.03.2019</td> </td>	SATISFACTORY	Date Tested: <td>19.03.2019</td>	19.03.2019
IR No: <td>-</td> <td>Tested By: <td>AHMED</td> </td>	-	Tested By: <td>AHMED</td>	AHMED
Location Provided By: <td>-</td> <td>Sample No.: <td>1</td> </td>	-	Sample No.: <td>1</td>	1

S/N	TYPE OF TEST	TEST METHOD	UNITS	TEST RESULTS
1	LOAD TEST	SAFE WORKING LOAD (SWL)	Kg/m	8.56
		DEFLECTION	mm	0.66
2	ZINC COATING MASS	BS EN ISO 1461	g/m <sup>2</sup>	580

FORM NO.: QSR/ICT/PP/02  
REV. NO.: 01/03/2016

Syed Mahmood  
Material Lab. Coordinator

QATAR INDUSTRIAL LABORATORIES W.L.L. HEAD OFFICE

• QIL is ISO/IEC 17025:2005 Accredited Laboratory. QIL Management System is ISO 9001:2008 Certified from ABS Quality Evaluations.  
• This certificate should not be reproduced other than in full, without the written approval of Qatar Industrial Laboratories W.L.L.  
• The above test results are only applicable to the sample(s) mentioned in this report.  
Laboratories of Ind. Area: P.O. Box 10415, Doha-Qatar, Tel.: 44601580 / 44601484 Fax: 44601739 Email: qil@qilqatar.com QR No. 17063  
Doha Office: 330, Al Muntash 5, Bld No. 148, New Al Salda, Tel.: 40291832 / 40293127 Fax: 40290544 Web: www.qilqatar.com



## مختبرات قطر الصناعية QATAR INDUSTRIAL LABORATORIES W.L.L.

TEST REPORT CABLE TRAY			
PROJECT CLIENT:		ASHGHAL	
CONTRACTOR:		ADVANCE LINE CABLE MANAGEMENT SYSTEM	
PROJECT:		GENERAL	
Sample Description:	CABLE TRAY 300 x 100 x 2.44 mm	Date Reported:	30.03.2019
Sample Source:	ADVANCE LINE CABLE MANAGEMENT SYSTEM	QIL Lab # /	
Sample Location:	ADVANCE LINE CABLE MANAGEMENT SYSTEM PLANT	Sample ID:	GTx-637-1-2
Sampled By:	QIL	Date Sampled:	17.03.2019
Sample Delivered By:	QIL	Date Received:	17.03.2019
Sample Condition Upon Receiving:	SATISFACTORY	Date Tested:	18.03.2019
IR No:	-	Tested By:	AHMED
Location Provided By:	-	Sample No.:	1

S/N	TYPE OF TEST	TEST METHOD	Units	TEST RESULTS
1	LOAD TEST	SAFE WORKING LOAD (SWL)	Rg/m	275
		FACTORED SAFE WORKING LOAD	Rg/m	183
2	ZINC COATING MASS	BS EN ISO 1463	g/cm <sup>2</sup>	523

FORM No.: QSR/CKT/99/02  
REV. No.: 01/09/2016

Syed Mahmood  
Material Lab. Coordinator

QATAR INDUSTRIAL  
QC CONTROLLED  
HEAD OFFICE

\* QIL is ISO/IEC 17025:2005 Accredited Laboratory. QIL Management System is ISO 9001:2008 Certified from ABS Quality Evaluations.  
\* This certificate should not be reproduced other than in full, without the written approval of Qatar Industrial Laboratories W.L.L.  
\* The above test results are only applicable to the sample(s) mentioned in this report.  
Laboratories of Ind. Area: P.O. Box 10415, Doha-Qatar, Tel.: 44601580 / 44601484 Fax: 44601739 Email: qil@qilqatar.com CR No. 17063  
Doha Office: 330, Al Muntashah St, Bld No. 148, New Al Solah, Tel.: 40291832 / 4029127 Fax: 40290544 Web: www.qilqatar.com



## مختبرات قطر الصناعية QATAR INDUSTRIAL LABORATORIES W.L.L.

### TEST REPORT ON SWL FOR SINGLE SPAN CABLE TRUNK

Project Client: ASHGHAL  
QIL Client : ADVANCE LINE CABLE MANAGEMENT SYSTEM

Name	Date	Signature
Prepared By: K. ATHUL REDDY	19-March-19	
Approved By: SYED MAHMOOD	20-March-19	

REPORT No / QIL LAB. No: GTX-636/1  
DATED : 19<sup>th</sup> March 2019

Prepared By: For: Qatar Industrial Laboratories  
P. O. Box 10415, Doha Qatar  
Tel.: +974 44601580; Fax: +974 44601739  
Advance Line Cable Management System  
P. O. Box 96068, Doha Qatar  
Tel.: +974 4449827; Fax: +974 44419827

\* QIL is ISO/IEC 17025:2005 Accredited Laboratory. QIL Management System is ISO 9001:2008 Certified from ABS Quality Evaluations.  
\* This certificate should not be reproduced other than in full, without the written approval of Qatar Industrial Laboratories W.L.L.  
\* The above test results are only applicable to the sample(s) mentioned in this report.  
Laboratories of Ind. Area: P.O. Box 10415, Doha-Qatar, Tel.: 44601580 / 44601484 Fax: 44601739 Email: qil@qilqatar.com CR No. 17063  
Doha Office: 330, Al Muntashah St, Bld No. 148, New Al Solah, Tel.: 40291832 / 4029127 Fax: 40290544 Web: www.qilqatar.com



## مختبرات قطر الصناعية QATAR INDUSTRIAL LABORATORIES W.L.L.

### TEST REPORT ON SWL FOR SINGLE SPAN CABLE TRAY

Project Client: ASHGHAL  
QIL Client : ADVANCE LINE CABLE MANAGEMENT SYSTEM

Name	Date	Signature
Prepared By: K. ATHUL REDDY	18-March-19	
Approved By: SYED MAHMOOD	20-March-19	

REPORT No / QIL LAB. No: GTX-637/1  
DATED : 18<sup>th</sup> March 2019

Prepared By: For: Qatar Industrial Laboratories  
P. O. Box 10415, Doha Qatar  
Tel.: +974 44601580; Fax: +974 44601739  
Advance Line Cable Management System  
P. O. Box 96068, Doha Qatar  
Tel.: +974 44419827; Fax: +974 44419827

\* QIL is ISO/IEC 17025:2005 Accredited Laboratory. QIL Management System is ISO 9001:2008 Certified from ABS Quality Evaluations.  
\* This certificate should not be reproduced other than in full, without the written approval of Qatar Industrial Laboratories W.L.L.  
\* The above test results are only applicable to the sample(s) mentioned in this report.  
Laboratories of Ind. Area: P.O. Box 10415, Doha-Qatar, Tel.: 44601580 / 44601484 Fax: 44601739 Email: qil@qilqatar.com CR No. 17063  
Doha Office: 330, Al Muntashah St, Bld No. 148, New Al Solah, Tel.: 40291832 / 4029127 Fax: 40290544 Web: www.qilqatar.com

Exova (Qatar) L.L.C.  
Street 43, Building 30  
Salwa Industrial Area  
P.O. Box 23850, Doha - Qatar

T: +974 44802002  
F: +974 44802046  
E: qatar.lab@exova.com  
W: www.exova.com



### Test Certificate

Advance Line Cable Management System  
Street 43, Gate 509  
Doha  
QATAR

Report Number: Q000545  
Page: 1 of 1  
Order Number: Q020458  
Date Tested: 14/02/19  
Date Reported: 14/02/19

Attn: Mr. Jithesh Thomas

Item: Coating Weight test of 100 x 100 x 1.1mm thick GI Sheet  
Specification: Q220  
Certificate No.: TY-CATHY-16054-056  
Specification: ASTM A90-90M : 2013

Coating Weight - ASTM A 90 - 13	Result	Comments
001 Sheet	See comments	See Below
Item 001: Side 1 (mm) : 57.7, 57.8, 57.6 Aug 57.7 Side 2 (mm) : 57.6, 57.6, 57.7 Aug 57.6 Area : 323.52 Initial Weight (Mass) of the Specimen (M1): 22.9566 grams. Weight (Mass) of Stripped Specimen (M2): 22.1710 grams Weight Difference: 0.7856 grams Coating Weight (g/m <sup>2</sup> ): 236.4		

#### Certificate Comments

End of Text

Tested by: Exova - Qatar

For and on authority of Exova (Qatar) L.L.C.  
SUNIL PULGAM  
Sr. Metallurgist

### TEST REPORT FOR CABLE TRAY, TRUNKING & CHANNEL ASSEMBLY IN THE OVEN AT 250 °C FOR 2 HOURS



#### ARAB CENTER FOR ENGINEERING STUDIES

Doha Qatar  
P.O. Box 19579  
Tel.: +974 44870141 Fax: +974 44870146  
Email: arab@aces-qatar.com  
Website: www.aces-qatar.com

◆ ACES Client : Advance Line Cable Management System  
◆ Project : Qatar Rail  
◆ Consultant : N.P.  
◆ Main Contractor : N.P.

Report No: T M Q I 1 8 0 0 6 2 6 0  
T M R I 1 8 0 2 4 7 2 2  
18<sup>th</sup> March, 2019

Rev.	Date	Description	Prep.	Check	Approved	QM Check
0	10.03.2018	Issued for client			G.Z.	A.S.

Registered Office: Exova (Qatar) L.L.C. P.O. Box 23850, Doha, State of Qatar.  
The material on this report is prepared by Exova (Qatar) L.L.C. and is the property of Exova (Qatar) L.L.C.  
This report is valid only for the sample(s) as reported by the client unless otherwise indicated.



Arab Center  
For Engineering Studies  
Load Test Report

Test Method Ref: NEMA VE 1 - 2009 / CSA C22.2 No. 139

ACES Client : Advance Line Cable Management System LLC  
Project Name : (General)  
Project No. :  
Client : Advance Line Cable Management System LLC  
Consultant :  
Date Reported : 18-Sep-17  
Request No. : PL017000155  
Report No. : PLR17001399  
Revision : 0  
Tested by : A. Batu

SAMPLE DETAILS	MOG Cable Tray	Testing Date
Sample Description	3000 (mm)	14-Sep-17
Length	600 (mm)	Method "B" (Residual)
Width	100 (mm)	NEMA Class 10C
Height	2 (mm)	Rated Load (given by client)
Thickness	2000 (mm)	Safety Factor
Test Spec Length	2000 (mm)	Total Test Load
Manufacturer	Advance Line Cable Management System LLC	Loading materials

#### TEST PROCEDURES

- Test sample shall be supported by rigid steel supports at both ends, allowing enough space below the set up for the sensors.
- Three deflection monitoring gauges (displacement transducers) shall be placed at midspan, 1/4 at center and the others on both sides.
- Initial readings of the gauges shall be recorded prior to initial loading.
- The specimen shall be loaded in 20 equal increments. Loading materials shall be loaded in a uniformly distributed manner.
- Readings shall be taken for each increment. Deflection at 10% shall be considered as initial deflection.
- After the reading for maximum load has been recorded, all loads shall be removed.
- The residual deflection shall be recorded 15 minutes after all loading materials has been removed.

#### TEST RESULT

Stage	Load Increment	Required Load (N)	Applied Load (N)	Deflection Readings (mm)				Remarks
				Side A	Mid-Span	Side B	Average	
0	0.000%	0	0.00	0.00	0.00	0.00	0.00	Initial Deflection
1	10.000%	67.05	67.63	1.20	4.74	1.31	2.42	
2	20.000%	134.10	134.32	1.74	8.79	2.45	4.83	
3	30.000%	201.15	201.48	2.79	12.22	3.48	8.39	
4	40.000%	268.20	268.64	3.09	15.13	4.27	7.50	
5	50.000%	335.25	335.8	4.59	17.78	5.85	9.17	
6	60.000%	402.30	403.12	4.84	19.79	6.84	10.42	
7	70.000%	469.35	469.34	4.88	20.61	7.10	10.85	
8	80.000%	536.40	536.34	5.37	21.65	7.88	11.81	
9	90.000%	603.45	603.34	5.55	22.30	8.29	12.54	
10	100.000%	670.50	670.34	6.09	23.05	8.84	12.66	
11	0.000%	0	0	0.16	0.11	0.90	0.26	Residual Deflection

Ratio of Residual Deflection to Initial Deflection: 10.62%

(shall be <80% as per NEMA)

Remarks: No signs of damage or deformation were observed during and after the test.

Page 1 of 2  
ACES-QAT / PLR17001399



مبنى المركز: 19579، الدوحة، قطر  
P.O. Box: 19579, Doha, Qatar  
Tel.: +974 44 870 141 Fax: +974 44 870 146  
E-mail: arab@aces-qatar.com www.aces-qatar.com



# Company Products

ADVANCE LINE IS A MANUFACTURER OF CABLE TRAY, CABLE LADDER, CABLE TRUNKING, STRUT CHANNELS AND GI SWITCH BOXES CONFORMING TO BS EN 61537:2007 & IEC 61537:2007 STANDARDS. EQUIPPED WITH HIGHEST TECHNOLOGY AND FULL AUTOMATIC PRODUCTION LINES, CNC MACHINES WE ENSURES THAT PRODUCT ARE STRICTLY CONTROLLED THROUGH QUALITY MANAGEMENT SYSTEM.

## 1. CABLE TRAYS:

ADVANCE LINE CABLE TRAYS ARE MANUFACTURED FULLY IN ACCORDANCE TO BRITISH STANDARD. STANDARD LENGTHS OF 3MTR & 2.44MTR ARE AVAILABLE IN DIFFERENT TYPES SUCH AS LIGHT DUTY, MEDIUM DUTY, HEAVY DUTY AND EXTRA HEAVY DUTY WITH INSIDE RETURN FLANGE. THESE CABLE TRAYS ARE EQUIPPED WITH THE NECESSARY FITTINGS AND ACCESSORIES IN HOT DIPPED GALVANIZED FINISH TO BS EN ISO 1461 OR ITS EQUIVQLENT ASTM A123 STANDARDS. SIZE VARIATIONS - WIDTH: 50MM UP TO 900MM, HEIGHT: 50MM UPTO 100MM, THICKNESS: 1.0MM UPTO 2.0MM).

## 2. CABLE LADDERS:

ADVANCE LINE CABLE LADDERS ARE MANUFACTURED FULLY IN ACCORDANCE TO BRITISH STANDARD. STANDARD LENGTHS OF 3MTR & 2.44MTR ARE AVAILABLE IN DIFFERENT TYPES SUCH AS HEAVY DUTY AND EXTRA HEAVY DUTY WITH NECESSARY FITTINGS AND ACCESSORIES IN HOT DIPPED GALVANIZED FINISH TO BS EN ISO 1461 OR ITS EQUIVALENT ASTM A123 STANDARDS. CUSTOM DESIGNED LADDERS FOR SPECIAL INSTALLATION CAN BE PROVIDED ON REQUEST. THE COMPANY OFFERS DIFFERENT FINISHES TO SUIT ALL REQUIREMENTS. SIZE VARIATIONS - WIDTH: 100MM UP TO 900MM, HEIGHT: 75MM UPTO 150MM, THICKNESS: 1.5MM UPTO 2.5MM).

## 3. CABLE TRUNKINGS:

ADVANCE LINE CABLE TRUNKINGS ARE ALSO DESIGNED TO ENSURE EASY INSTALLATION AND ARE AVAILABLE IN STANDARD LENGTH OF 3MTR OR 2.44MTR ADHERING TO BS 4678 PART 1. THE TRUNKING COVERS ARE OF JET LOCK & SCREW FIXING TYPE. JET LOCKED COVERS REQUIRE MINIMUM ROTATION TO FASTEN ITSELF STRONGLY. ADVANCE LINE CABLE TRUNKINGS ARE MANUFACTURED FROM PRE-GALVANIZED STEEL SHEETS CONFROMING TO BS EN 10142 & 10143 AND BS EN 10326 & 10327 STANDARDS. SIZE VARIATIONS - WIDTH: 50MM UP TO 400MM, HEIGHT: 50MM UPTO 400MM, THICKNESS: 1.0MM UPTO 2.0MM).

## 4. STRUT CHANNELS AND SUPPORT SYSTEMS:

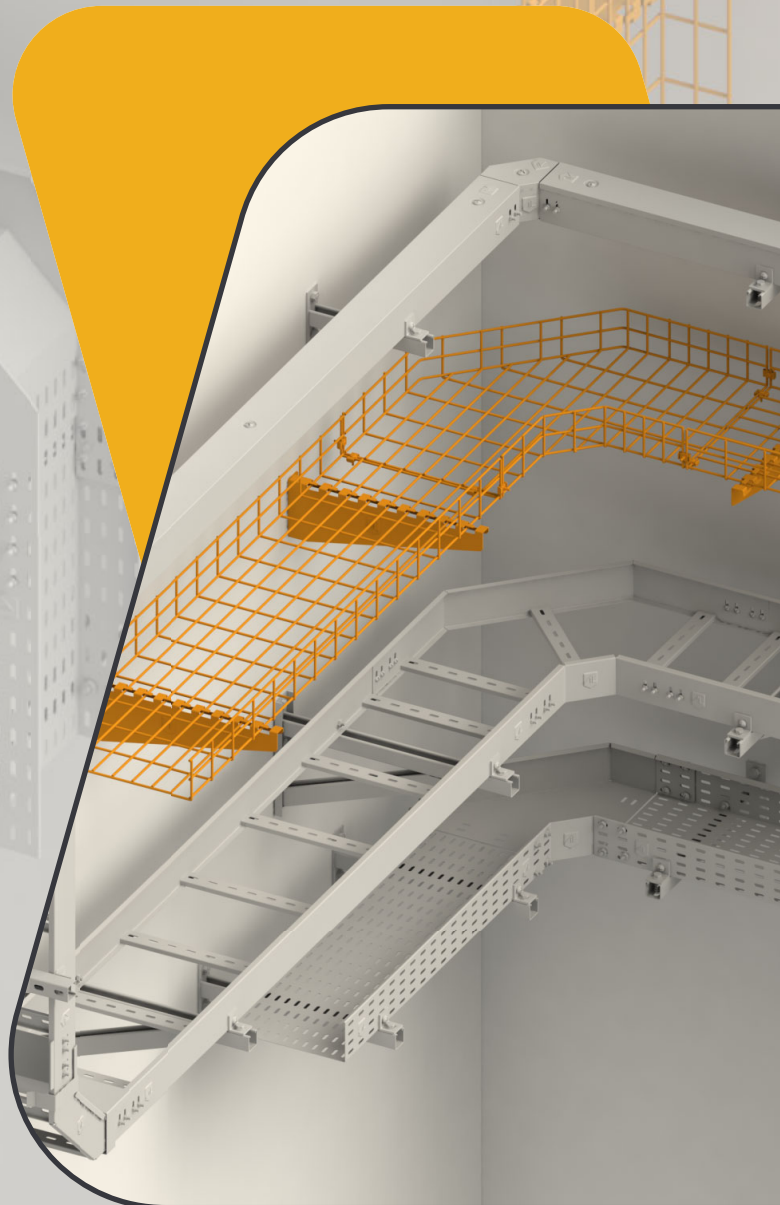
ADVANCE LINE MANUFACTURES STRUT CHANNELS(BOTH SLOTTED & PLAIN) AS WELL AS ALL KINDS OF SUPPORT SYSTEM THAT ARE REQUIRED FOR THE INSTALLATIONS OF CABLE MANAGEMENT SYSTEMS ADHERING TO BS 6946 STANDARD. OUR ENGINEERS ARE ALWAYS WORKING TOWARDS THE MODIFICATION AND INNOVATIONS TO INCREASE THE QUALITY AND OPTIMUM USAGE OF THE METAL FRAMING SYSTEM. THE COMPREHENSIVE RANGE OF STRUT CHANNELS, CANTILEVER ARMS, BASE PLATES, BEAM CLAMPS ETC. ARE MADE IN HOT DIP GALVANIZED FINISH TO BS EN ISO 1461 OR ITS EQUIVALENT ASTM A123 STANDARDS.

## 5. CABLE BASKET TRAY:

ADVANCE LINE CABLE BASKET TRAY DESIGN ALLOWS CONTINUOUS AIRFLOW, PREVENTS THE BUILDUP OF DUST, CONTAMINANTS AND BACTERIAL PROLIFERATION. STRONG, FLEXIBLE AND ADAPTABLE, ADVANCE LINE BASKET TRAY COME IN FULL RANGE OF SIZES AND IS MADE WITH HIGH-STRENGTH WELDED STEEL WIRES. SUPPORT ACCESSORIES FOR ANY APPLICATION OR SITUATION ARE AVAILABLE.

## 6. GI BACK BOXES:

ADVANCE LINE IS THE FIRST AND ONLY MANUFACTURER FOR GI SWITCH BOXES IN THE STATE OF QATAR. OUR PRODUCTION LINE CAN PRODUCE 50 BOXES PER MINUTE. ALL BOXES ARE MANUALLY INSPECTED BY OUR QUALITY PERSONNEL FOR ANY DEFECTS OR OTHER QUALITY ISSUES. THE IP RATING IS SET TO IP41 WHICH MEETS THE REQUIREMENTS FOLLOWED HERE IN THE STATE OF QATAR.



# Materials and Finishing Standards

TYPE	FINISHING STANDARDS
PRE GALVANIZED (PG/GI)	Steel sheet conforming to BS EN 10327 & 10327 and BS EN 10142 & 10143 Standards. The substrate is mild steel grade where zinc coating is applied before metal forming with a coating Thickness of 10-22 microns.
HOT DIP GALVANIZED (HDG)	Steel Sheets of grades JIS G1312, JIS G3131 and RST37-2 DIN 17100-80 are used for fabricating which are galvanized to the requirements of BS EN ISO 1461 & ASTM A123 generating a coating Thickness of at least 65 microns.
STAINLESS STEEL (SS)	Sheet conforming to AISI Type 304 & 316 are used to fabricate Trays, Ladders, Trunkings and related accessories.
ALUMINUM (AL)	Sheet conforming to 1050 Alloy are used to fabricate Trays, Ladders, Trunkings And related accessories.
POWDER COATED(PC)	Trays, Ladders and Trunkings are fabricated and Powder Coated with RAL 7040 or RAL 7001 coating after Hot Dip Galvanizing as per requirement.

## Product Handling

### LOADING & UNLOADING:

SITE DELIVERIES SHOULD PREFERABLY ONLY BE MADE WHERE SUITABLE MECHANICAL HANDLING EQUIPMENT IS AVAILABLE ON SITE. THE DELIVERED MATERIAL MUST BE TREATED WITH CARE. LIFTING MUST ONLY BE CARRIED OUT FROM THE SIDES AND THE FORKLIFT TRUCK TINES MUST PASS BELOW A COMPLETE BUNDLE. TINES MUST NEVER\* BE INSERTED INTO THE END OF THE BUNDLE, UNLESS PROVISION IS MADE SUCH AS SPECIAL PACKING AND/OR EXTENDED TINES, OTHERWISE THE SAFETY LIMITS OF THE LIFTING VEHICLE MAY BE EXCEEDED AND DAMAGE MAY BE CAUSED TO THE EQUIPMENT BEING LIFTED. FOR UNLOADING BY CRANE SUITABLE LIFTING BEAMS SHOULD BE INSERTED FROM SIDE TO SIDE BENEATH A BUNDLE AND THESE MUST BE SUFFICIENTLY LONG TO AVOID UNDUE PRESSURE ON THE EDGES OF THE BOTTOM COMPONENTS. THE TENSIONED BANDING USED FOR SECURING BUNDLES OF EQUIPMENT DURING TRANSPORT IS NOT SUITABLE FOR LIFTING PURPOSES. WHEN CUTTING AND BENDING APPROPRIATE EYE PROTECTION MUST BE WORN TO AVOID INJURY. SHEARED STEEL (PARTICULARLY PRE GALVANIZED OR STAINLESS STEEL) DOES HAVE RELATIVELY SHARP EDGES AND PROTECTIVE GLOVES MUST BE WORN DURING HANDLING.

### STORAGE CONDITIONS:

WAREHOUSING OF PRODUCT SHOULD BE ROOFED AND AIRED PREMISES. KEEP AWAY FROM WATER. FOR PROTECTION OF UNCOVERED PLACES DAMAGED AT ASSEMBLY SPRAY ZINC PAINT IS RECOMMENDED. WET STORAGE STAIN (WHITE RUST) IS CAUSED BY THE ENTRAPMENT OF MOISTURE BETWEEN SURFACE OF CLOSELY PACKED AND POORLY VENTILATED MATERIAL FOR AN EXTENDED PERIOD. WET STORAGE STAIN IS USUALLY SUPERFICIAL, HAVING NO AFFECT ON THE PROPERTIES OF THE METAL. LIGHT STAINING NORMALLY DISAPPEARS WITH WEATHERING. MEDIUM TO HEAVY BUILD UP SHOULD BE REMOVED IN ORDER TO ALLOW THE FORMATION OF NORMAL PROTECTIVE FILM. PROPER HANDLING AND STORAGE WILL HELP TO ASSURE STAIN-FREE MATERIAL. IF THE PRODUCT ARRIVES WET, IT SHOULD BE UNPACKED AND DRIED BEFORE STORAGE. DRY MATERIAL SHOULD BE STORED IN A WELL VENTILATED LOW MOISTURE "ENVIRONMENT TO AVOID CONDENSATION FORMATION.

**EQUIPMENT LIST:**

01. CABLE TRAY FULL AUTOMATIC ROLL FORMING MACHINE
02. C-CHANNEL FULL AUTOMATIC ROLL FORMING MACHINE
03. FULL AUTOMATIC G.I SWITCH BOX MACHINE
04. PNEUMATIC PRESS 150 TONS MACHINE
05. LASER CUTTING MACHINE - 2PCS
06. CNC PUNCH PRESSING MACHINE
07. HYDRAULIC POWER PRESS MACHINE
08. HYDRAULIC SHEARING MACHINE - 2PCS
09. PRESS BREAK MACHINE
10. 25T PUNCHING MACHINE - 4PCS
11. LOGO PUNCHING PRESS MACHINE
12. FIBER LASER WELDING MACHINE
13. OPEN BACK INCLINABLE PRESS MACHINE
14. POWDER COATING MACHINE
15. SEMI AUTOMATIC IRON WORKER MACHINE
16. METAL CORNER NOTCHING MACHINE
17. WELDING MACHINE - 2PCS
18. BENCH TOP DRILL PRESS MACHINE

# Production Equipment



Laser Cutting Machine



CNC Punch Pressing Machine



Cable tray full automatic roll forming machine



C-Channel full automatic roll forming machine



Powder Coating



Iron Works Machine



## Sample Boards



NFPA 130-2007



## Our Project



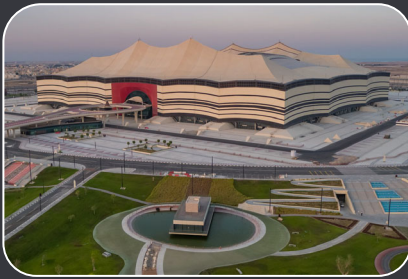
OIL AND GAS



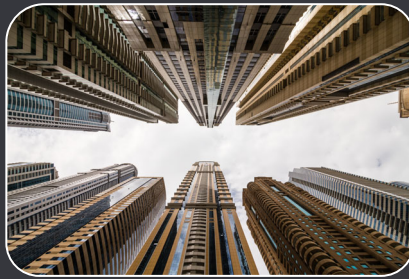
PUBLIC TRANSPORTATION



MALLS



STADIUMS



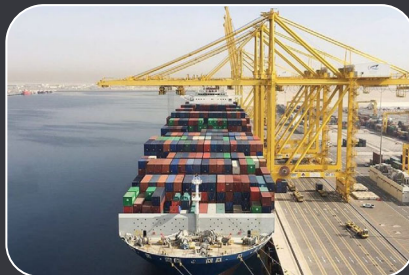
HIGH-RISE BUILDINGS



HEALTH CARES



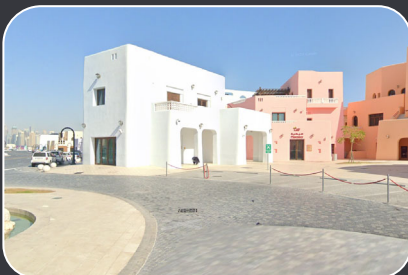
GOVERNMENT PROJECTS



SHIPPING AND PORTS



ROADS AND HIGHWAYS



VILLAS



OFFICES



SOLAR ENERGY



[www.AL-qatar.com](http://www.AL-qatar.com)  
[info@AL-qatar.com](mailto:info@AL-qatar.com)



+974 44419827  
 +974 66141726  
 +974 55073385



Birkat Al-Awamer, Doha-Qatar  
 PO Box: 10367



NFPA 130-2007



# ADVANCE LINE

## Low-Voltage Switchgear & Control Panels

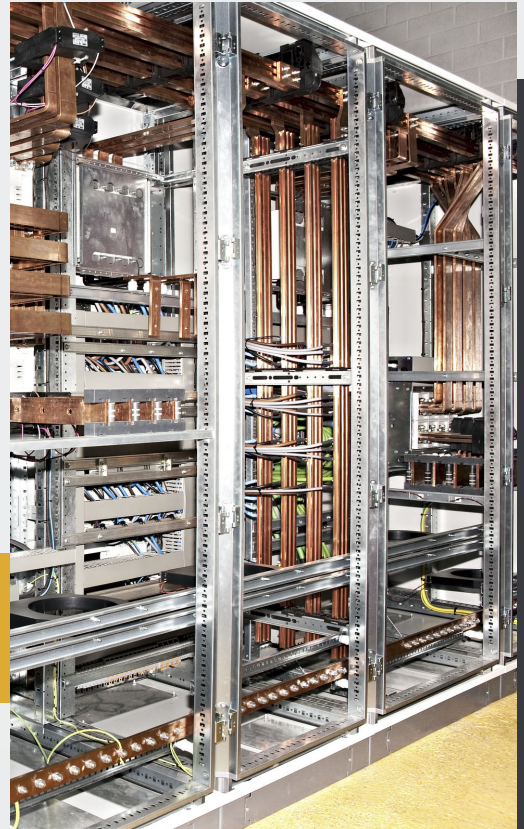


*Reliable. Scalable.  
Engineered for Performance.*

## About Low-Voltage Switchgear & Control Panels

**ADVANCE LINE** is a specialized engineering company engaged in the design, manufacturing, testing, and commissioning of low voltage switchgear and control panel systems. With a commitment to safety, efficiency, and customization, we provide high-performance electrical panels for a variety of industries including commercial buildings, factories, infrastructure, and utilities.

We integrate advanced technologies and premium components to deliver systems that meet the highest international standards.





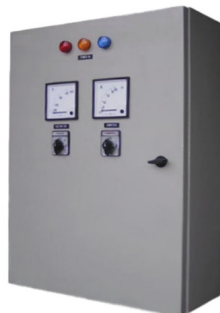
## Vision

To be a trusted name in low voltage solutions by driving innovation, safety, and excellence in every panel we build.

## Mission

- To deliver high-quality, cost-effective switchgear solutions.
- To meet and exceed client expectations.
- To uphold the highest standards of safety and compliance.





## We offer an extensive range of LV Products including

- LV Panels
- ATS & Synchronization Panels.
- Main Distribution Boards (MDB)
- Sub Main Distribution Boards (SMDB)
- Final Distribution Boards (FDB)
- Feeder Pillars
- Capacitor Bank Panels (PFC).
- Motor Control Panels (MCC)
- VFD and Soft Starter Panels
- HVAC, Pumps & Lighting Control panels.
- Fire Override Panels
- Maintenance works.

**ABB****Schneider**  
Electric**SIEMENS****EATON**



SCAN



CATALOGUE

## CONTACT US



[www.AL-qatar.com](http://www.AL-qatar.com)  
[info@AL-qatar.com](mailto:info@AL-qatar.com)



+974 44419827  
+974 66141726  
+974 55073385



*Birkat Al-Awamer, Doha-Qatar*  
*PO Box: 10367*